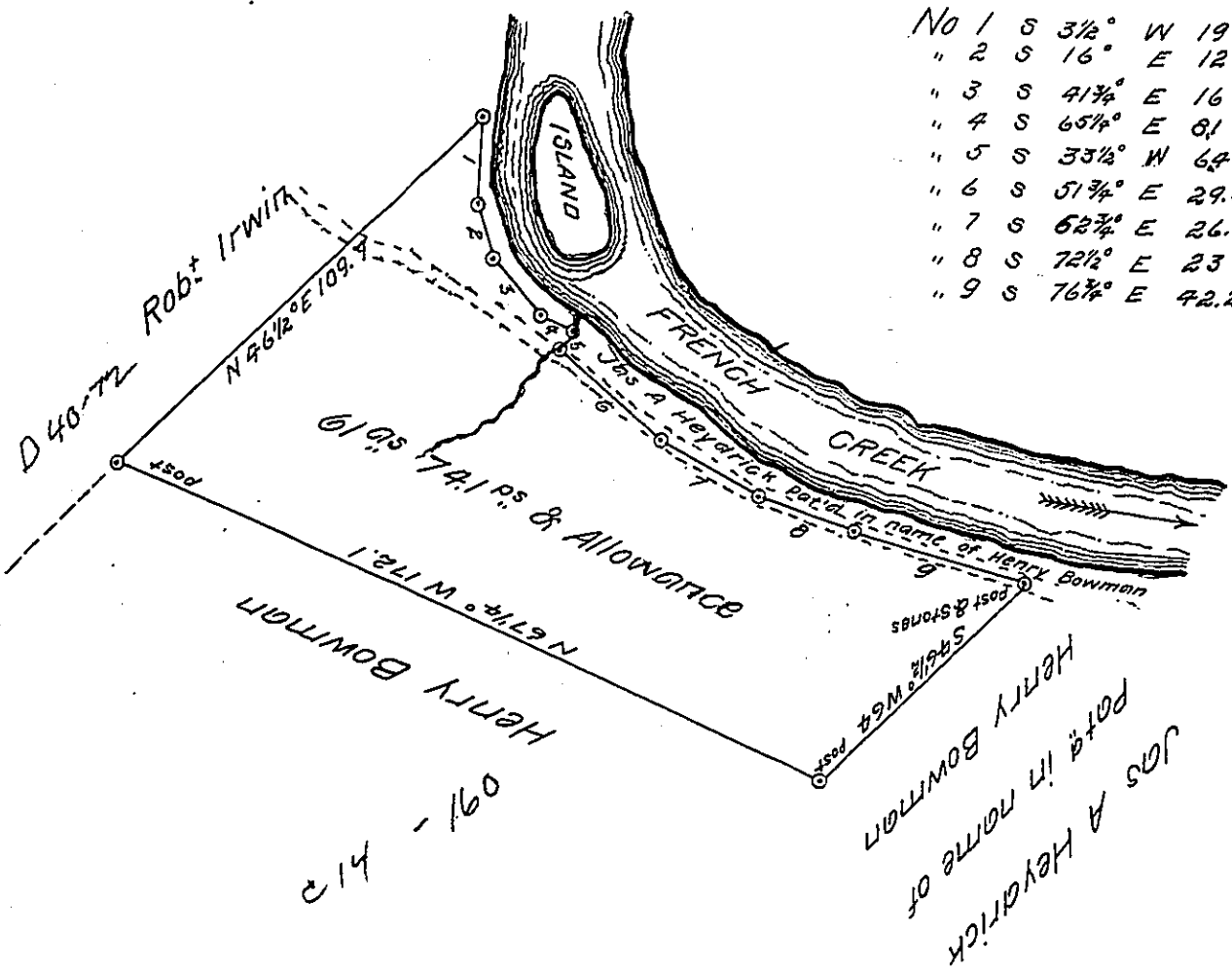


Courses & distances down French
 to Run - up Run to Road - down
 Road to Post & Stones

No 1	S	3 1/2°	W	19	to Post
" 2	S	16°	E	12	" "
" 3	S	41 3/4°	E	16	" "
" 4	S	65 1/4°	E	81	" " in run
" 5	S	33 1/2°	W	64	" " road
" 6	S	51 3/4°	E	29.6	" " w walnut
" 7	S	62 3/4°	E	26.2	" " "
" 8	S	72 1/2°	E	23	" " "
" 9	S	76 3/4°	E	42.2	" Post & stones



A draft of a tract of land situated in the Township of French
 Creek and County of Venango containing sixty one (61) acres seventy
 four & one tenth perches and allowance of six per cent for roads etc.
 Surveyed the twenty fifth day of April 1861 ~~was~~ in pursuance of a warrant
 granted to Jas A Heydrick dated the 18th day of February 1861
 To Thomas J Stewart Esq } W^m Hilands
 Secretary of Internal Affairs } County Surveyor

IN TESTIMONY that the above is a copy of the original remaining on file in
 the Department of Internal Affairs of Pennsylvania, made
 conformably to an Act of Assembly approved the 16th day of
 February, 1833, I have hereunto set my Hand and caused
 the Seal of said Department to be affixed at Harrisburg,
 this nineteenth day of May 1905

Loac R. [Signature]
 Secretary of Internal Affairs.